

# **Attachment B**

**Selected Drawings**



VIEW AT COR. OF CLEVELAND & MARRIOTT ST.



VIEW ALONG CLEVELAND ST.

Revision	DESCRIPTION	DATE	APP.
1	ISSUED FOR DA	26.06.23	AC
2	ISSUED TO COUNCIL	15.05.24	AC

Client  
**STASIA PTY LTD**

Project  
**Cleveland St Mixed Use**

Drawing  
**PHOTOMONTAGE SHEET  
1 OF 3**

A1 Scale  
Project **220098**  
Issue **2**

Number **DD - DR - AR - DA 350**

Details  
Copyright Conrad Gargett, ACH 636 465 373 ABN 61 636 465 373  
Do not scale this drawing and verify all dimensions and levels on site.  
Nominated Architect: Lawrence Tomko NSW Reg. 10255,  
Nominated Architect: Ollian Condon NSW Reg. 11726,  
Nominated Architect: Laura Cookburn NSW Reg. 6360.



DEVELOPMENT APPROVAL



VIEW ALONG MARRIOT ST.



VIEW ALONG JAMES ST.

Revision	DESCRIPTION	DATE	APP.
1	ISSUED FOR DA	26.06.23	AC
2	ISSUED TO COUNCIL	15.05.24	AC

Client  
**STASIA PTY LTD**

Project  
**Cleveland St Mixed Use**

Drawing  
**PHOTOMONTAGE SHEET  
2 OF 3**

A1 Scale  
Project 220098  
Issue 2

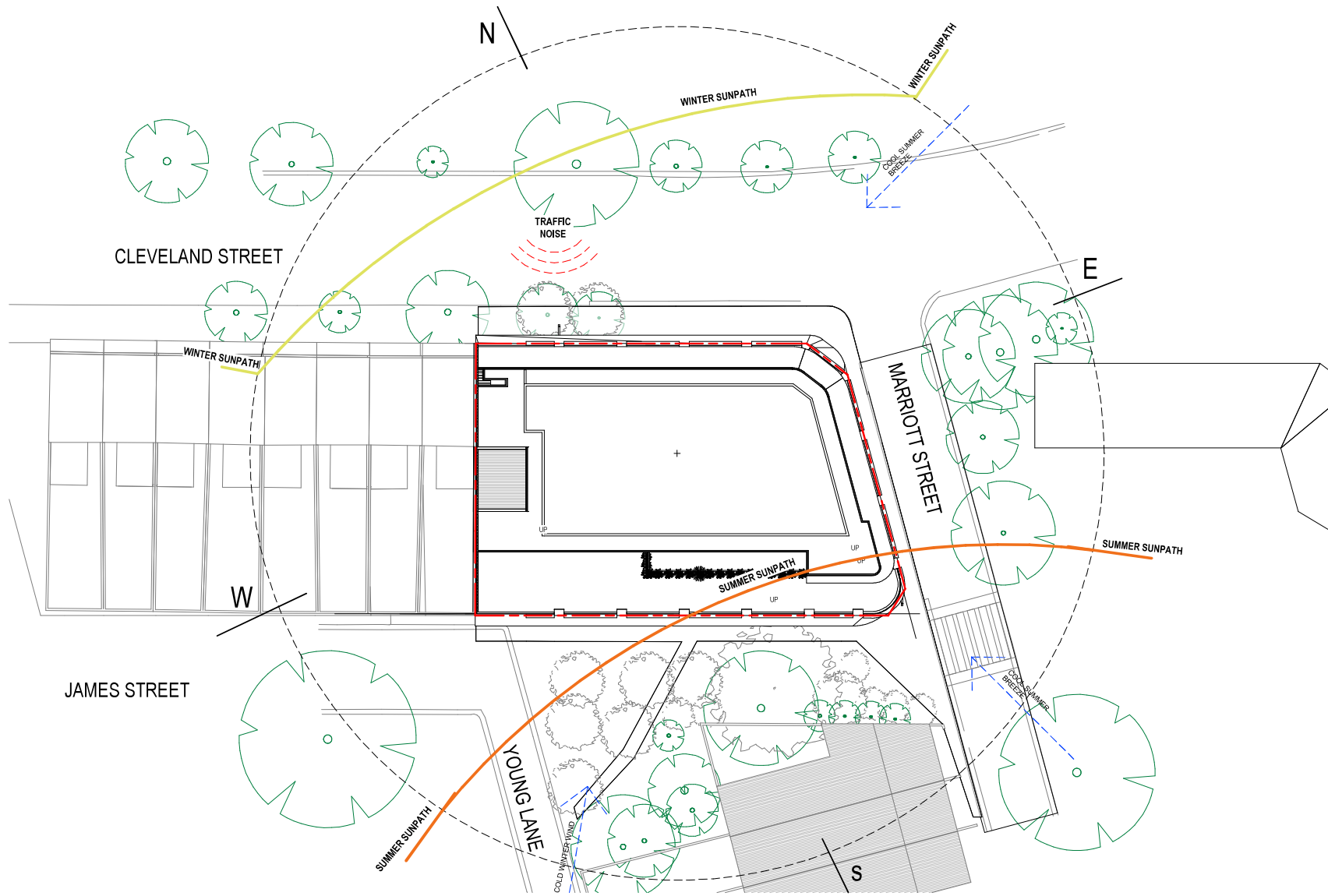
Number DD - DR - AR - DA 351

Details  
Copyright Conrad Gargett, ACN 636 465 373 ABN 61 636 465 373  
Do not scale this drawing and verify all dimensions and levels on site.  
Nominated Architect: Lawrence Tomko NSW Reg. 10253,  
Nominated Architect: Gillian Donohue NSW Reg. 11726,  
Nominated Architect: Laura Cookburn NSW Reg. 6360,



DEVELOPMENT APPROVAL

141



Revision	DESCRIPTION	DATE	APP.
1	ISSUED FOR DA	26.06.23	AC
2	ISSUED TO COUNCIL	15.05.24	AC

Client  
**STASIA PTY LTD**

Project  
**Cleveland St Mixed Use**

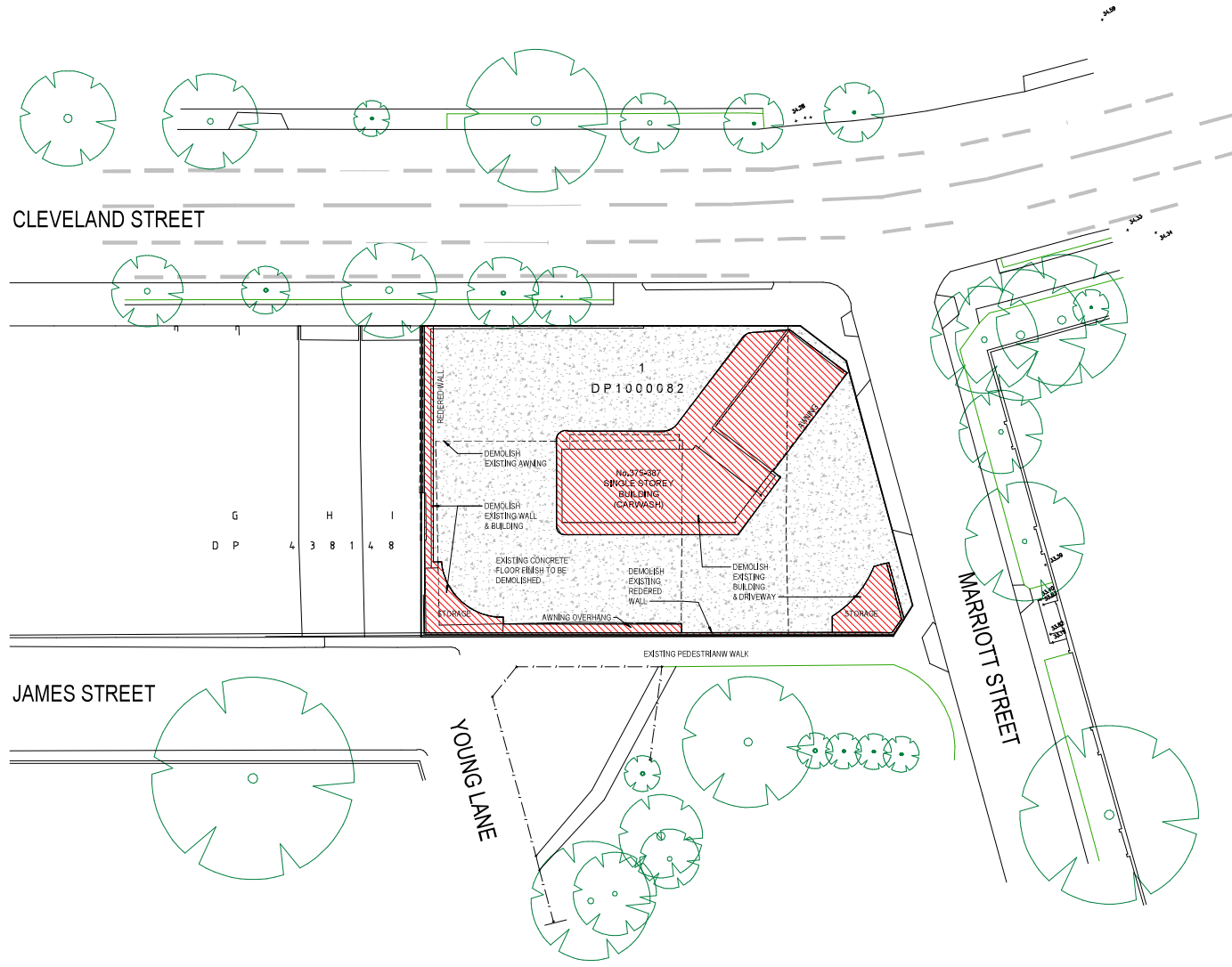
Drawing  
**BUILT FORM ANALYSIS**

A1 Scale 1 : 200  
Project 220098  
Issue 2

Number DD - DR - AR - DA 003

Details  
Copyright Conrad Gargett. ACN 636 465 373 ABN 61 636 465 373  
Do not scale this drawing and verify all dimensions and levels on site.  
Nominated Architect: Lawrence Tomko NSW Reg. 10255,  
Nominated Architect: Gillian Condon NSW Reg. 11726,  
Nominated Architect: Laura Cookburn NSW Reg. 6360.





REV	DESCRIPTION	DATE	APP.
1	ISSUED FOR DA	26.06.23	AC
2	ISSUED TO COUNCIL	15.05.24	AC

Client  
**STASIA PTY LTD**

Project  
**Cleveland St Mixed Use**

Drawing  
**DEMO PLAN**

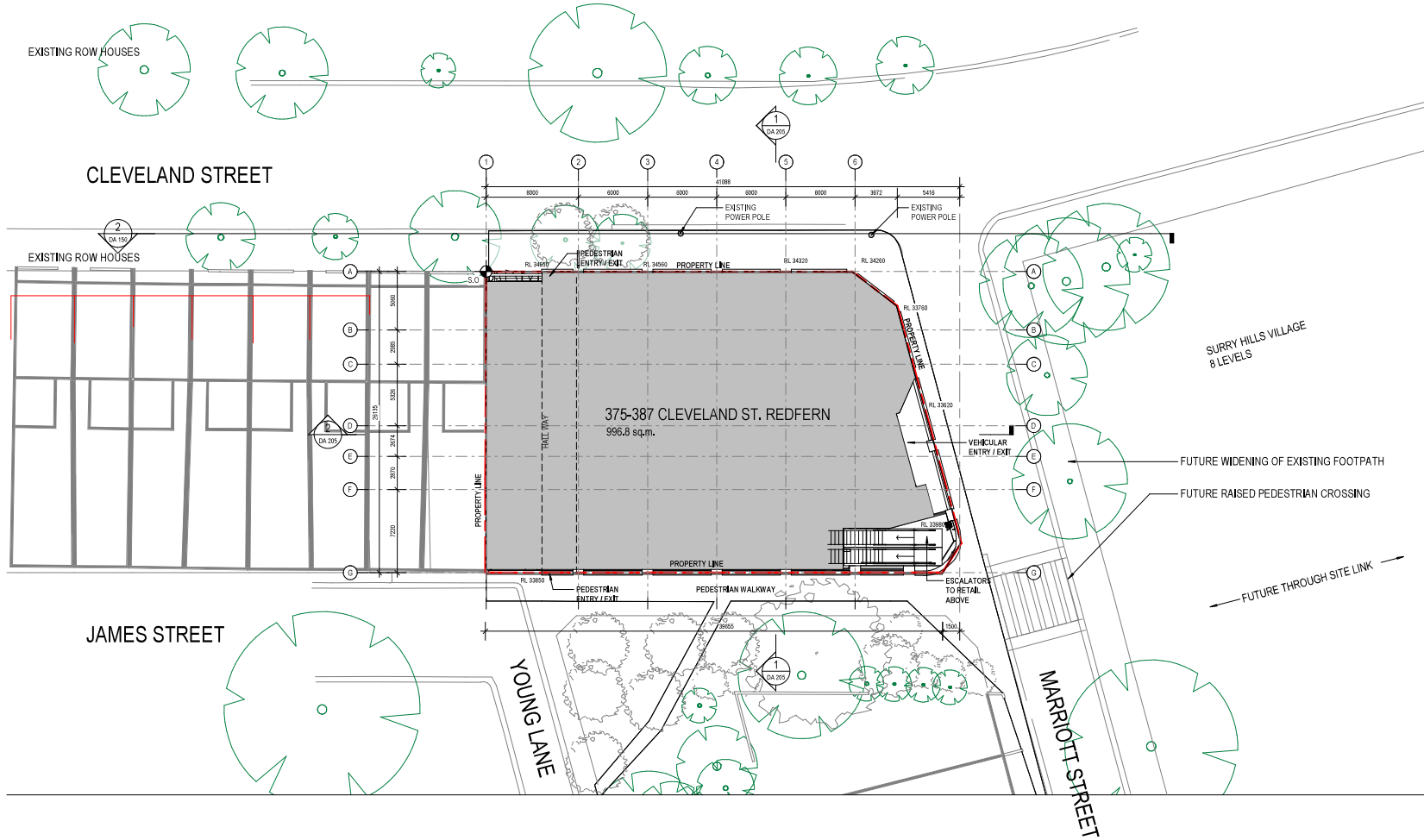
A1 Scale 1 : 200  
Project 220098  
Issue 2

Number DD - DR - AR - DA 010

Details  
Copyright Conrad Gargett. ACN 636 465 373 ABN 61 636 465 373  
Do not scale this drawing and verify all dimensions and levels on site.  
Nominated Architect: Lawrence Tomko NSW Reg. 10555.  
Nominated Architect: Orlan Condon NSW Reg. 11726.  
Nominated Architect: Laura Cookburn NSW Reg. 6360.



DEVELOPMENT APPROVAL



Revision	DESCRIPTION	DATE	APP.
1	ISSUED FOR DA	20.06.23	AC
2	ISSUED TO COUNCIL	15.05.24	AC

Client  
**STASIA PTY LTD**

Project  
**Cleveland St Mixed Use**

Drawing  
**SITE PLAN**

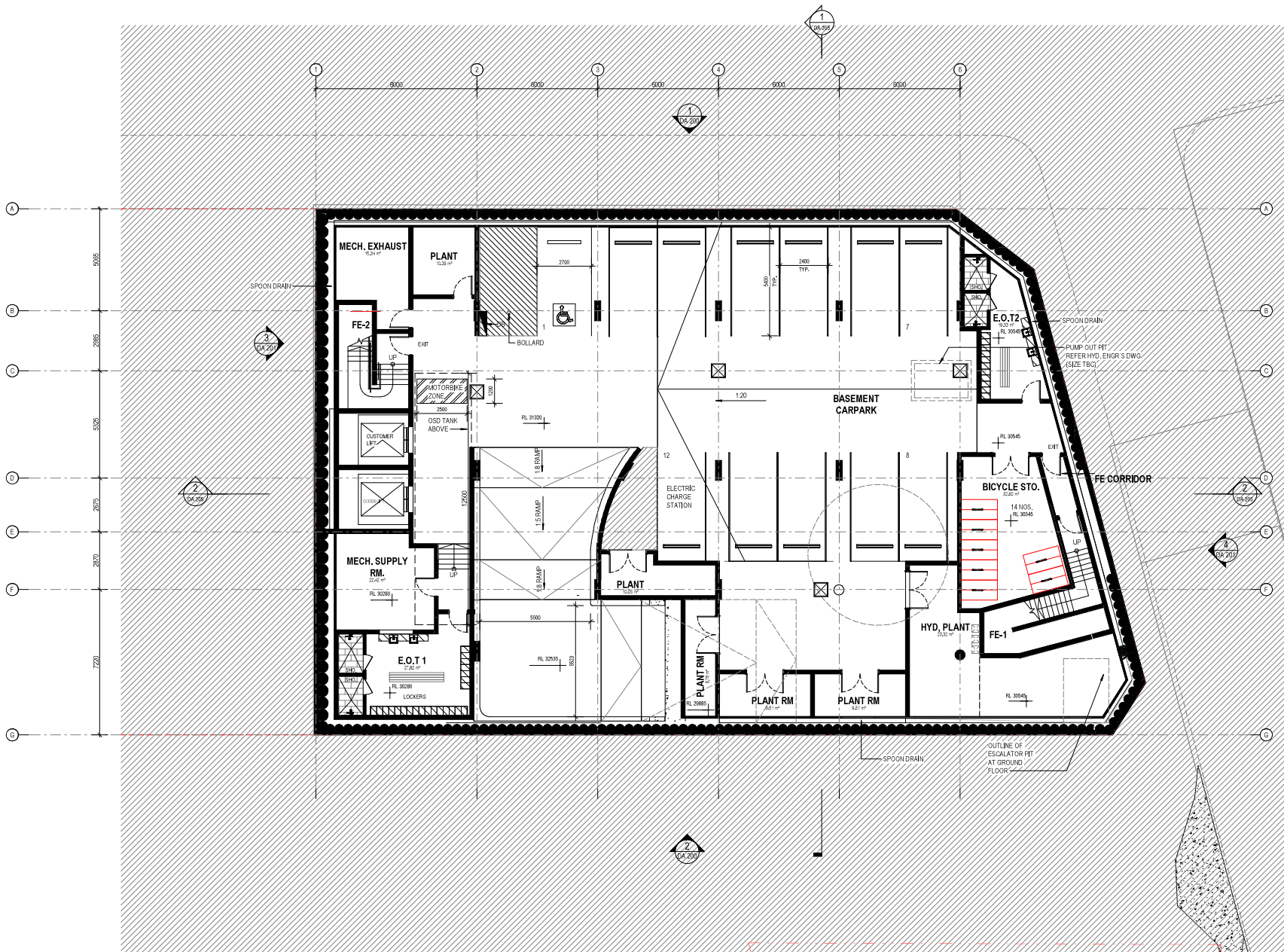
A1 Scale 1 : 200  
Project 220098  
Issue 2

Number DD - DR - AR - DA 020

Details  
Copyright Conrad Gargett. ACN 636 465 373 ABN 61 636 465 373  
Do not scale this drawing and verify all dimensions and levels on site.  
Nominated Architect: Lawrence Tomko NSW Reg. 10255,  
Nominated Architect: Orlan Condon NSW Reg. 11726,  
Nominated Architect: Laura Cookburn NSW Reg. 6360.



144



REV	DESCRIPTION	DATE	APP.
1	ISSUED FOR DA	30.06.23	AC
2	ISSUED FOR INFORMATION	30.01.24	AC
3	ISSUED FOR INFORMATION	26.02.24	AC
4	ISSUED TO COUNCIL	07.03.24	AC
5	ISSUED TO CONSULTANT	02.06.24	JM
6	ISSUED TO COUNCIL	15.06.24	AC

Client  
**STASIA PTY LTD**

Project  
**Cleveland St Mixed Use**

Drawing  
**BASEMENT PLAN**

A1 Scale: 1 : 100  
Project: 220098  
Issue: 6

Number: DD - DR - AR - DA 100

Details  
Copyright Conrad Gargett. A/CN 536 455 373 A/B/N 61 636 455 373  
Do not scale this drawing and verify all dimensions and levels on site.  
Nominated Architect: Lawrence Tomko NSW Reg. 10255.  
Nominated Architect: Coban Condon NSW Reg. 11726.  
Nominated Architect: Laura Cookburn NSW Reg. 6360.



**FINISHES LEGEND**

ABBREV	DESCRIPTION
BRK	ASSORTED RED BRICK
CFP	CEMENT FINISH PANELLING
CN	CONCRETE
DB	DISTRIBUTION BOARD
DBF	HAWA VARIOTEC GLAZED BI-FOLD DOORS OR EQUIVALENT
DP	DOWNPIPE
FRZ	FROSTED GLASS FINISH
GAF	GLAZING ALUMINUM FRAME - BLACK
GOB	COLOR BACKED OPAQUE EXTERNAL GLAZING-GREY
GLE	EXTERNAL GLAZING
LS	SWITCH LIGHT
MCF	METAL FINISH CAPPING TO MATCH GAF
MFC	METAL FINISH CLADDING
MFP	METAL FINISH PROFILES TO MATCH MFC
MLV	METAL LOUVRES COLOUR TO MATCH GAF
PCF	PAINTED COLOUR TO MATCH CFP
POD	PERFORATED PANEL LIFT DOOR
RPC	RIBBED PRECAST CONCRETE PANEL
TLG	TILING

Revision	REV. DESCRIPTION	DATE	APP.
1	ISSUED FOR INFORMATION	30.01.24	AC
2	ISSUED FOR INFORMATION	26.02.24	AC
3	ISSUED FOR INFORMATION	29.02.24	AC
4	ISSUED FOR INFORMATION	29.02.24	AC
5	ISSUED TO COUNCIL	07.03.24	AC
6	ISSUED TO COUNCIL	12.04.24	AC
7	ISSUED TO CONSULTANT	02.05.24	JN
8	ISSUED TO COUNCIL	15.06.24	AC

Client  
**STASIA PTY LTD**

Project  
**Cleveland St Mixed Use**

Drawing  
**GROUND FLOOR PLAN**

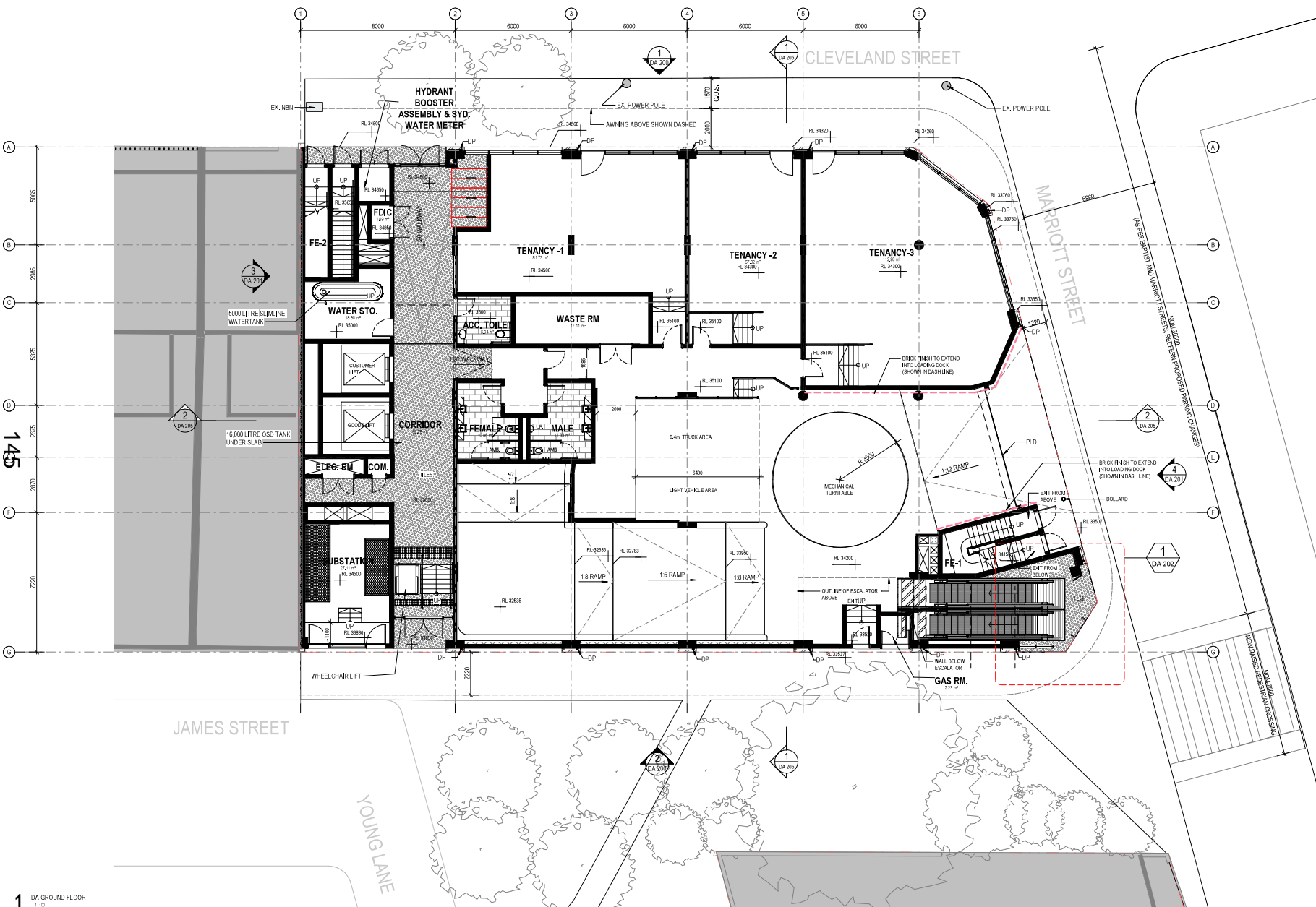
A1 Scale 1 : 100  
Project 220098  
Issue 8

Number DD - DR - AR - DA 101

**DEVELOPMENT APPROVAL**

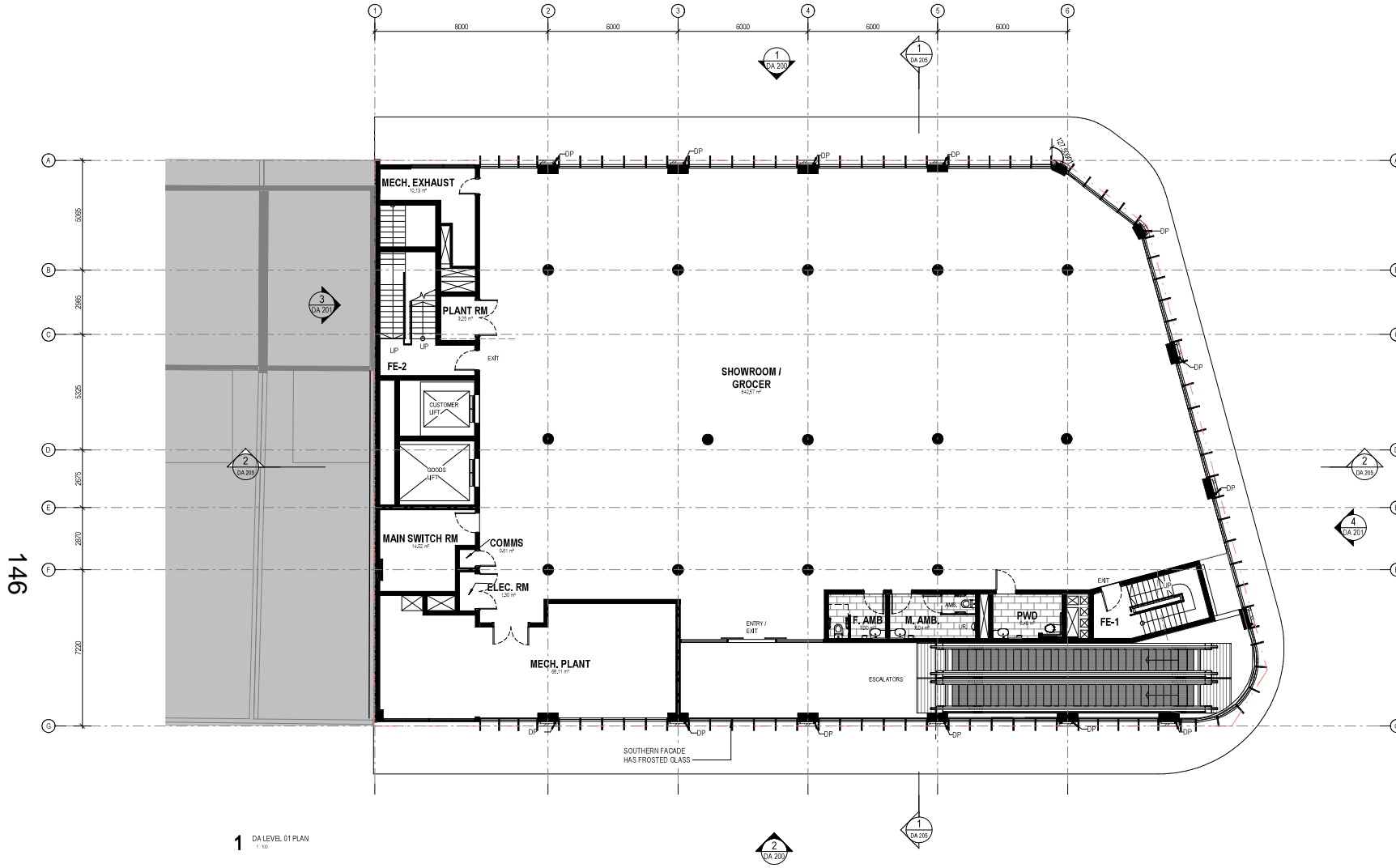
Details  
Copyright Conrad Gargett, ACN 630 465 373 ABN 81 630 465 373  
Do not take this drawing and verify all dimensions and levels on site.  
Nominated Architect: Laurence Todd NSW Reg. 10255,  
Nominated Architect: Gillian Donohue NSW Reg. 11726,  
Nominated Architect: Laura Cookburn NSW Reg. 6360.

1 0 1 2 3 4 5 6 7  
SCALE 1:100



1 DA GROUND FLOOR  
1:100





**FINISHES LEGEND**

ABBREV	DESCRIPTION
BRK	ASSORTED RED BRICK
CFP	CEMENT FRESH PANELLING
CN	CONCRETE
DB	DISTRIBUTION BOARD
DBF	HAWA VARIOTEC GLAZED BI-FOLD DOORS OR EQUIVALENT
DP	DOWNPIPE
FRZ	FROSTED GLASS FINISH
GAF	GLAZING ALUMINIUM FRAME - BLACK
GGB	COLOR BACKED OPAQUE EXTERNAL GLAZING-GREY
GLE	EXTERNAL GLAZING
LS	SWITCH LIGHT
MCP	METAL FINISH COPPING TO MATCH GAF
MFC	METAL FINISH CLADDING
MFP	METAL FINISH PROFILES TO MATCH MFC
MLV	METAL LOUVRES COLOUR TO MATCH GAF
PCF	PAINTED COLOUR TO MATCH GAF
PCD	PERFORATED PANEL LIFT DOOR
PLD	PERFORATED PANEL LIFT DOOR
RPC	RIBBED PRECAST CONCRETE PANEL
TLG	TILING

REV	DESCRIPTION	DATE	APP.
1	ISSUED FOR DA	30.06.23	AC
2	ISSUED FOR INFORMATION	26.02.24	AC
3	ISSUED FOR INFORMATION	29.02.24	AC
4	ISSUED TO COUNCIL	07.03.24	AC
5	ISSUED TO COUNCIL	12.04.24	AC
6	ISSUED TO CONSULTANT	02.05.24	JN
7	ISSUED TO COUNCIL	15.05.24	AC

Client  
**STASIA PTY LTD**

Project  
**Cleveland St Mixed Use**

Drawing  
**LEVEL 1 FLOOR PLAN**

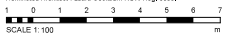
A1 Scale: **1 : 100**

Project: **220098**

Issue: **7**

Number: **DD - DR - AR - DA 102**

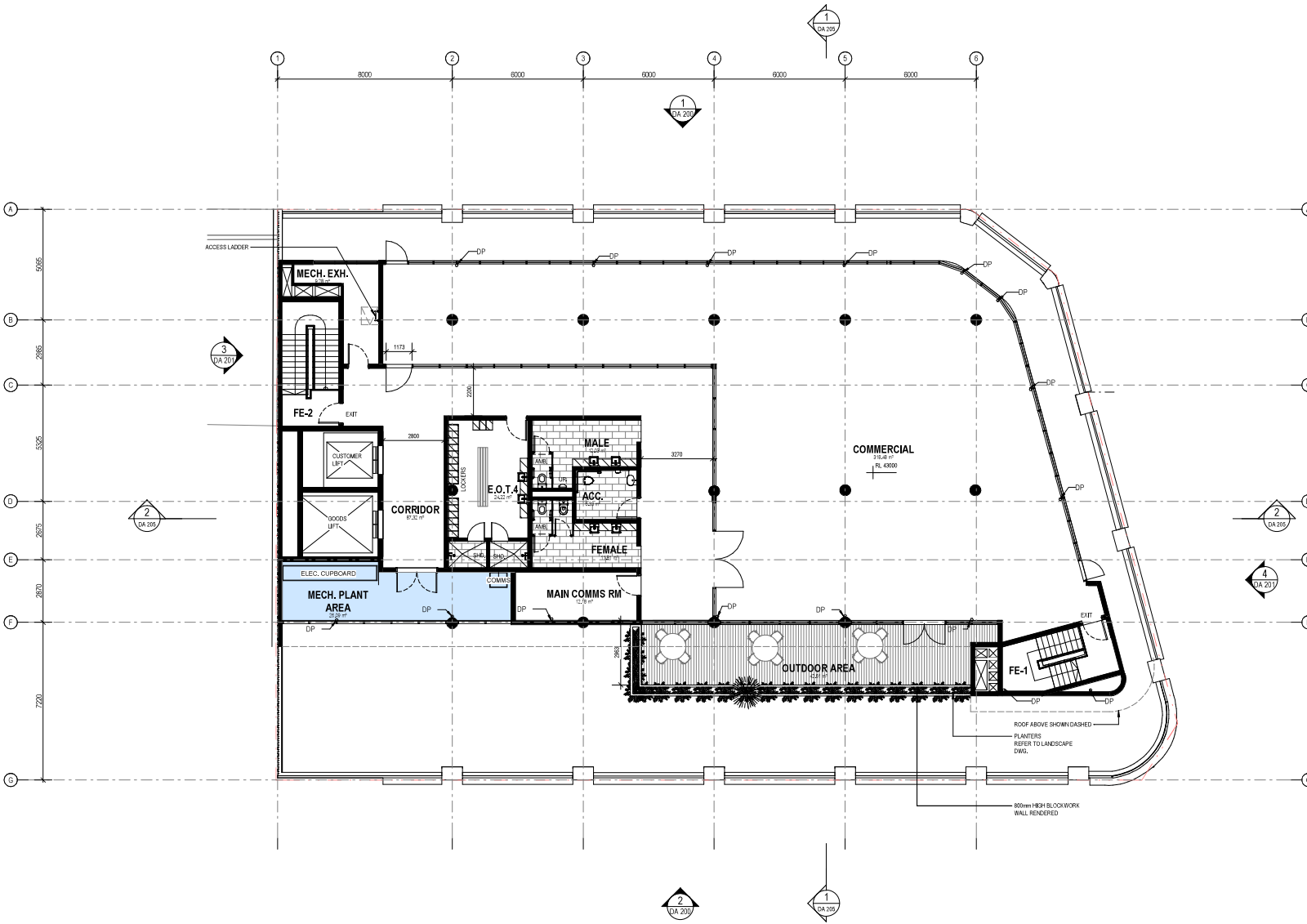
Details  
Copyright Conrad Gargett. ACH 536 455 373 ABN 61 631 455 373  
Do not scale this drawing and verify all dimensions and levels on site.  
Nominated Architect: Lawrence Totho NSW Reg. 10255.  
Nominated Architect: Ollian Condonson NSW Reg. 11726.  
Nominated Architect: Laura Cookburn NSW Reg. 6360.



146

**1** DA LEVEL 01 PLAN  
1-10

**DEVELOPMENT APPROVAL**



147

1 DA LEVEL 02 PLAN  
1:100

REV	DESCRIPTION	DATE	APP.
1	ISSUED FOR DA	30.06.23	AC
2	ISSUED FOR INFORMATION	26.05.24	AC
3	ISSUED FOR INFORMATION	29.02.24	AC
4	ISSUED TO COUNCIL	07.03.24	AC
5	ISSUED TO COUNCIL	12.04.24	AC
6	ISSUED TO CONSULTANT	02.05.24	JN
7	ISSUED TO COUNCIL	15.05.24	AC

Client  
**STASIA PTY LTD**

Project  
**Cleveland St Mixed Use**

Drawing  
**LEVEL 02 GA PLAN**

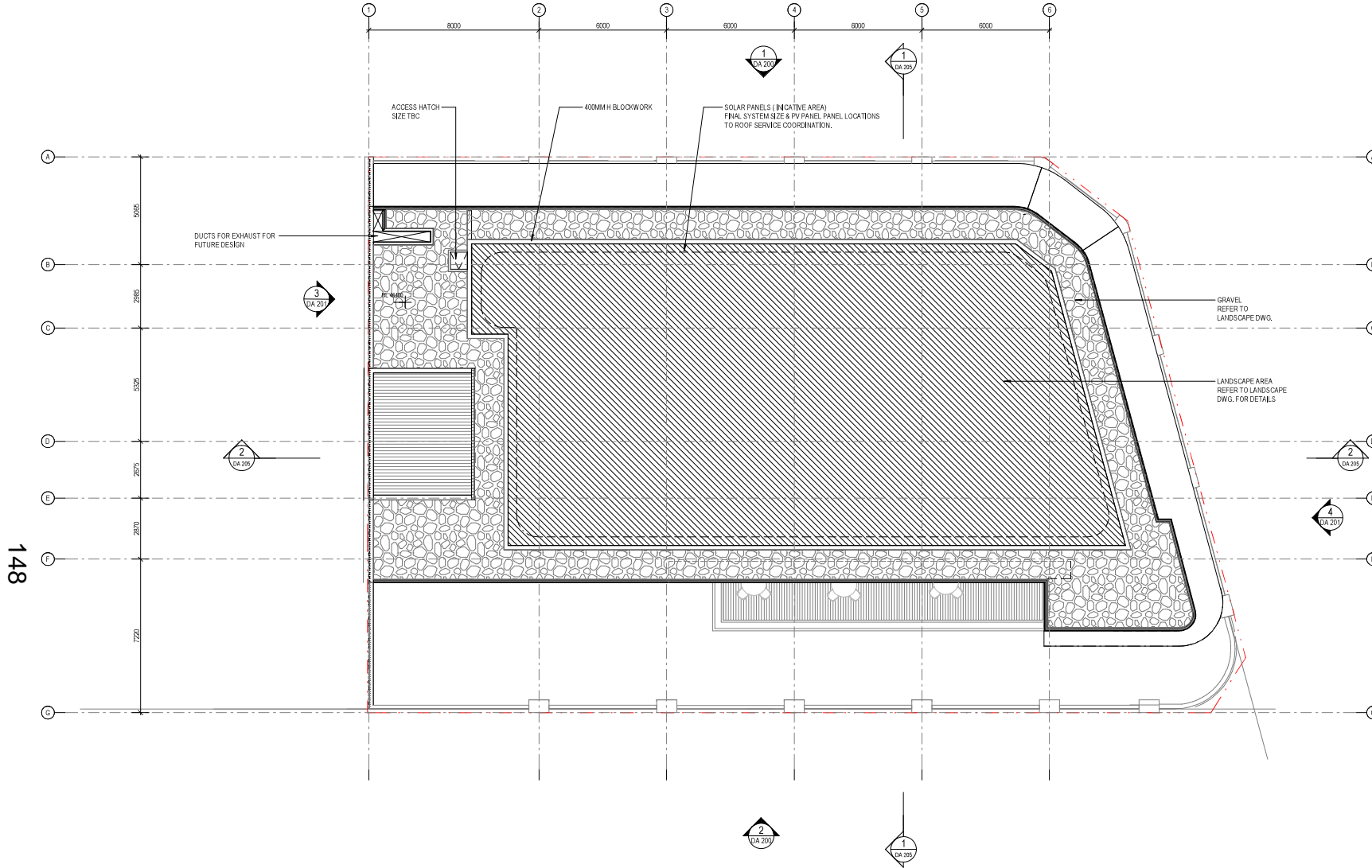
A1 Scale: 1 : 100  
Project: 220098  
Issue: 7

Number DD - DR - AR - DA 103

Details  
Copyright Conrad Gargett. ACN 636 465 373 ABN 61 636 465 373  
Do not scale this drawing and verify all dimensions and levels on site.  
Nominated Architect: Lawrence Tomko NSW Reg. 10255.  
Nominated Architect: Brian Condon NSW Reg. 11726.  
Nominated Architect: Laura Cookburn NSW Reg. 6360.

SCALE 1:100

DEVELOPMENT APPROVAL



1 DA\_ROOF PLAN  
1/100

REV	DESCRIPTION	DATE	APP.
1	ISSUED FOR DA	30.06.23	AC
2	ISSUED FOR INFORMATION	26.05.24	AC
3	ISSUED FOR INFORMATION	29.02.24	AC
4	ISSUED TO COUNCIL	07.03.24	AC
5	ISSUED TO COUNCIL	12.04.24	AC
6	ISSUED TO CONSULTANT	02.05.24	JN
7	ISSUED TO COUNCIL	15.05.24	AC

Client  
**STASIA PTY LTD**

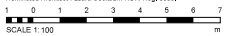
Project  
**Cleveland St Mixed Use**

Drawing  
**ROOF PLAN**

A1 Scale: 1 : 100  
Project: 220098  
Issue: 7

Number: DD - DR - AR - DA 104

Details  
Copyright Conrad Gargett. A/CN 638 465 373 A/B 61 638 465 373  
Do not scale this drawing and verify all dimensions and levels on site.  
Nominated Architect: Lawrence Tomko NSW Reg. 10255.  
Nominated Architect: Orlan Cookson NSW Reg. 11726.  
Nominated Architect: Laura Cookson NSW Reg. 6360.



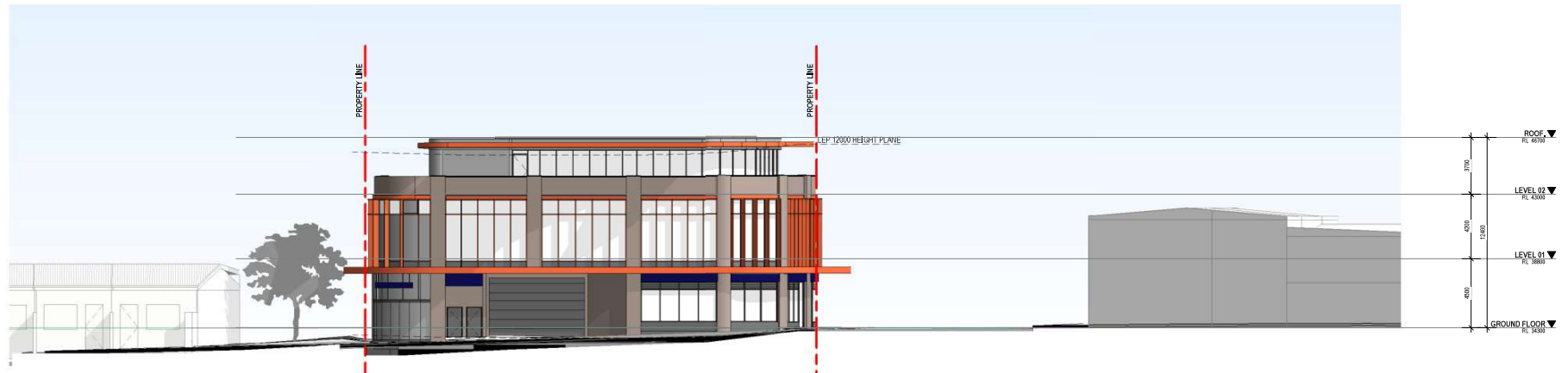
DEVELOPMENT APPROVAL



1 Street Elevation\_Cleveland st.  
1:150



2 Street Elevation\_Cleveland\_photomontage  
1:150



3 Street Elevation\_Marriott st.  
1:150

149

REV	DESCRIPTION	DATE	APP.
1	ISSUED FOR DA	20.06.23	AC
2	ISSUED FOR INFORMATION	20.05.24	AC
3	ISSUED TO COUNCIL	07.03.24	AC
4	ISSUED TO COUNCIL	15.05.24	AC

Client  
**STASIA PTY LTD**

Project  
**Cleveland St Mixed Use**

Drawing  
**STREET ELEVATIONS**

A1 Scale **1 : 150**

Project **220098**

Issue **4**

Number **DD - DR - AR - DA 150**

Details  
Copyright Conrad Gargett. ACN 636 465 373 ABN 61 636 465 373  
Do not scale this drawing and verify all dimensions and levels on site.  
Nominated Architect: Lawrence Toalbo NSW Reg. 10255,  
Nominated Architect: Gillian Condon NSW Reg. 11726,  
Nominated Architect: Laura Cookburn NSW Reg. 6360.



DEVELOPMENT APPROVAL



1 DA NORTH ELEVATION  
1:150

**FINISHES LEGEND**

ABBREV.	DESCRIPTION
BRK	ASSORTED RED BRICK
CFP	CEMENT FINISH PANNELLING
CN	CONCRETE
DB	DISTRIBUTION BOARD
DBF	HAWA VARETEC GLAZED BI-FOLD DOORS OR EQUIVALENT
DP	DOWNPIPE
FRZ	FROSTED GLASS FINISH
GAF	GLAZING ALUMINIUM FRAME - BLACK
GCB	COLOR BACKED OPAQUE EXTERNAL GLAZING-GREY
GLE	EXTERNAL GLAZING
LS	SWITCH LIGHT
MCP	METAL FINISH CAPPING TO MATCH GAF
MFC	METAL FINISH CLADDING
MFP	METAL FINISH PROFILES TO MATCH MFC
MLV	METAL LIVOURES COLOUR TO MATCH GAF
PCF	PAINTED COLOR TO MATCH CFP
PCG	PAINTED COLOR TO MATCH GAF
PLD	PERFORATED PANEL LIFT DOOR
RFC	RIBBED PRECAST CONCRETE PANEL
TLG	TILING

**SIGNAGE LEGEND**

ABBREV.	DESCRIPTION
S1	5050 X 530 MM ILLUMINATED SIGN ZONE
S2	4800 X 530 MM ILLUMINATED SIGN ZONE
S3	3350 X 530 MM ILLUMINATED SIGN ZONE
S6	1500 X 350 MM ILLUMINATED HARPER SIGN
S7	2500 X 900 MM ILLUMINATED HARPER SIGN

150

REV	DESCRIPTION	DATE	APP.
1	ISSUED FOR DA	30.06.23	AC
2	ISSUED TO COUNCIL	14.11.23	AC
3	ISSUED FOR INFORMATION	29.02.24	AC
4	ISSUED TO COUNCIL	07.03.24	AC
5	ISSUED TO COUNCIL	12.04.24	AC
6	ISSUED TO CONSULTANT	02.05.24	JN
7	ISSUED TO COUNCIL	15.05.24	AC



2 DA SOUTH ELEVATION  
1:150

REV	DESCRIPTION	DATE	APP.
1	ISSUED FOR DA	30.06.23	AC
2	ISSUED TO COUNCIL	14.11.23	AC
3	ISSUED FOR INFORMATION	29.02.24	AC
4	ISSUED TO COUNCIL	07.03.24	AC
5	ISSUED TO COUNCIL	12.04.24	AC
6	ISSUED TO CONSULTANT	02.05.24	JN
7	ISSUED TO COUNCIL	15.05.24	AC

Client  
**STASIA PTY LTD**

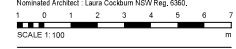
Project  
**Cleveland St Mixed Use**

Drawing  
**NORTH & SOUTH ELEVATION**

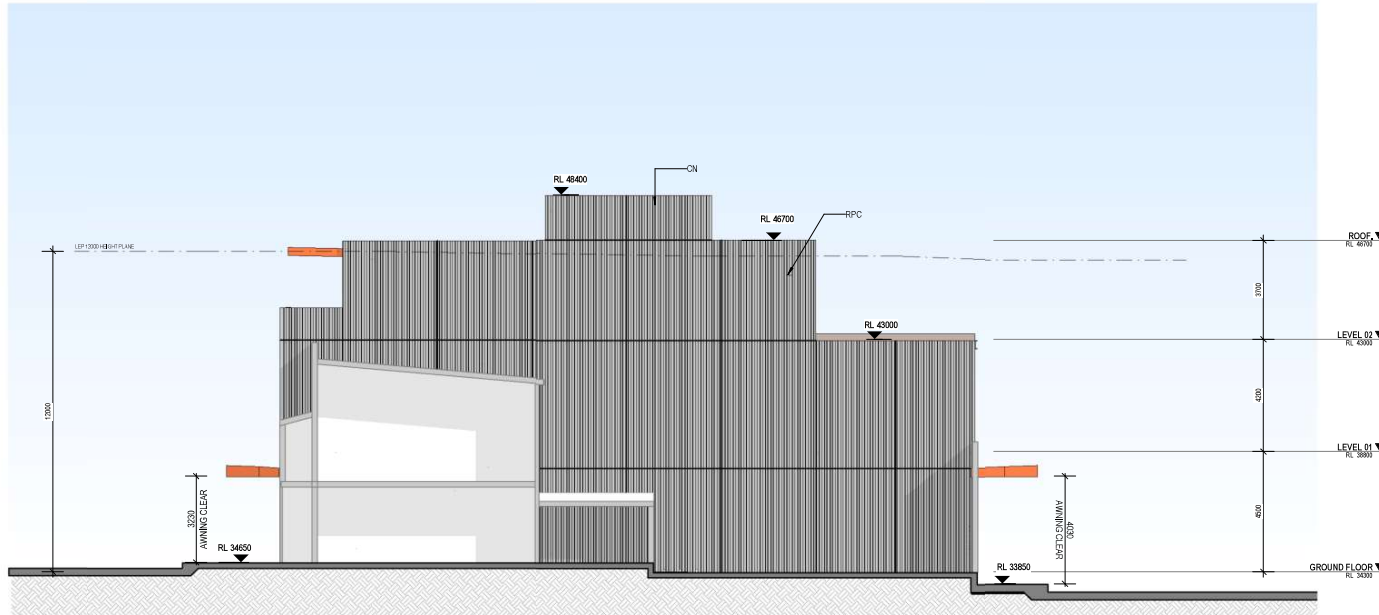
A1 Scale: 1:100  
Project: 220098  
Issue: 7

Number DD - DR - AR - DA 200

Details  
Copyright Conrad Gargett. ACN 556 455 373 ABN 51 531 455 373  
Do not scale this drawing and verify all dimensions and levels on site.  
Nominated Architect: Lawrence Tomko NSW Reg. 10255.  
Nominated Architect: Gillian Cookson NSW Reg. 11726.  
Nominated Architect: Laura Cookburn NSW Reg. 6360.



DEVELOPMENT APPROVAL



3 DA WEST ELEVATION  
1:100

**FINISHES LEGEND**

ABBREV	DESCRIPTION
BRK	ASSORTED RED BRICK
CFP	CEMENT FINISH PANELLING
CN	CONCRETE
DB	DISTRIBUTION BOARD
DBF	HAWA VARJOTEC GLAZED BI-FOLD DOORS OR EQUIVALENT
DP	DOWNPIPE
FRZ	FROSTED GLASS FINISH
GAF	GLAZING ALUMINIUM FRAME - BLACK
GCB	COLOUR BACKED OPAQUE EXTERNAL GLAZING-GREY
GLE	EXTERNAL GLAZING
LS	SWITCH LIGHT
MCP	METAL FINISH CAPPING TO MATCH GAF
MFC	METAL FINISH CLADDING
MFP	METAL FINISH PROFILES TO MATCH MFC
MLV	METAL LOUVRES COLOUR TO MATCH GAF
PCF	PAINTED COLOUR TO MATCH CFP
PCG	PERFORATED PANEL LIFT DOOR
PLD	RIBBED PRECAST CONCRETE PANEL
RPC	RIBBED PRECAST CONCRETE PANEL
TLG	TILING

**SIGNAGE LEGEND**

ABBREV.	DESCRIPTION
S1	5560 X 430 MM ILLUMINATED SIGN ZONE
S2	4800 X 430 MM ILLUMINATED SIGN ZONE
S3	3990 X 430 MM ILLUMINATED SIGN ZONE
S6	1500 X 350 MM ILLUMINATED HARPER SIGN
S7	2500 X 900 MM ILLUMINATED HARPER SIGN

Revision	DESCRIPTION	DATE	APP.
1	ISSUED FOR DA	30.06.23	AC
2	ISSUED TO COUNCIL	14.11.23	AC
3	ISSUED FOR INFORMATION	29.02.24	AC
4	ISSUED TO COUNCIL	07.03.24	AC
5	ISSUED TO COUNCIL	12.04.24	AC
6	ISSUED TO CONSULTANT	02.05.24	JN
7	ISSUED TO COUNCIL	15.05.24	AC

Client  
**STASIA PTY LTD**

Project  
**Cleveland St Mixed Use**

Drawing  
**EAST & WEST ELEVATION**

A1 Scale: 1:100  
Project: 220098  
Issue: 7

Number: DD - DR - AR - DA 201

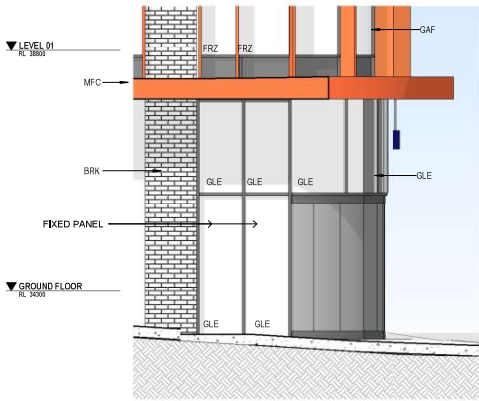
**DEVELOPMENT APPROVAL**

Details  
Copyright Conrad Gargett. A/CN 538 450 373 A/BM 81 638 465 375  
Do not scale this drawing and verify all dimensions and levels on site.  
Nominated Architect: Lawrence Tobias NSW Reg. 10255,  
Nominated Architect: Gillian Cookson NSW Reg. 11726,  
Nominated Architect: Laura Cookburn NSW Reg. 6360.

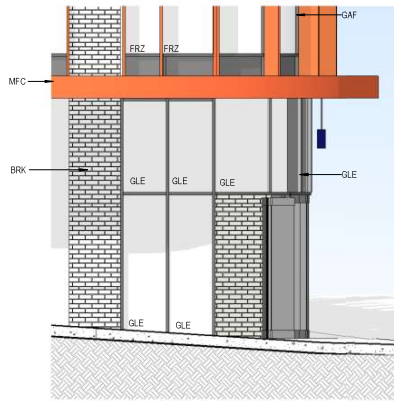
SCALE: 1:100



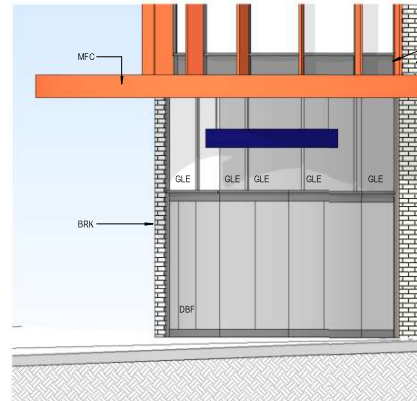
4 DA EAST ELEVATION - SQUARE  
1:100



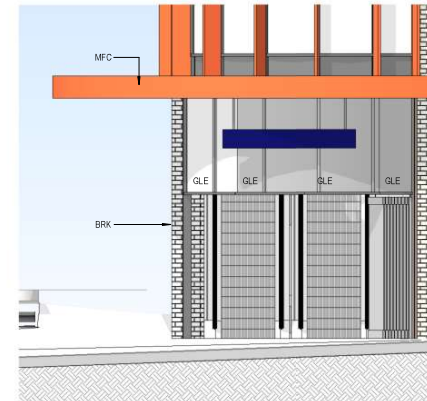
3 SOUTH ELEVATION (CLOSED)  
1:50



4 SOUTH ELEVATION (OPEN)  
1:50



5 EAST ELEVATION (CLOSED)  
1:50

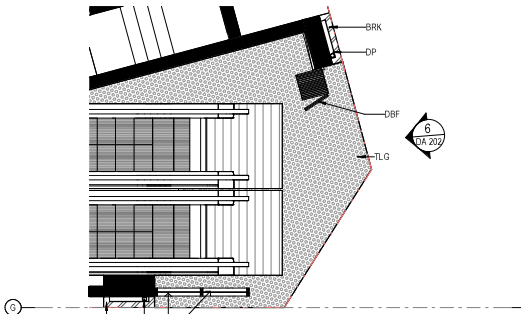


6 EAST ELEVATION (OPEN)  
1:50

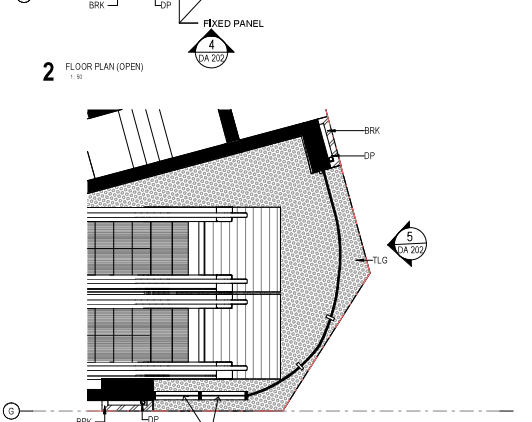
FINISHES LEGEND

BRK	ASSORTED RED BRICK
CFP	CEMENT FINISH PANNELLING
ON	CONCRETE
DB	DISTRIBUTION BOARD
DBF	DARK BACKED OPAQUE EXTERNAL GLAZING-GREY
DP	DOWNPIPE
FRZ	FROSTED GLASS FINISH
GAF	GLAZING ALUMINIUM FRAME - BLACK
GGB	COLOUR BACKED OPAQUE EXTERNAL GLAZING-GREY
GLE	EXTERNAL GLAZING
LS	SWITCH LIGHT
MCP	METAL FINISH CAPPING TO MATCH GAF
MFC	METAL FINISH CLADDING
MFP	METAL FINISH PROFILES TO MATCH MFC
MLV	METAL LOUVRES COLOUR TO MATCH GAF
PCF	PAINTED COLOUR TO MATCH CFP
PGD	PERFORATED PANEL LIFT DOOR
PLD	PERFORATED PANEL LIFT DOOR
RPC	RIBBED PRECAST CONCRETE PANEL
TLG	TILING

152

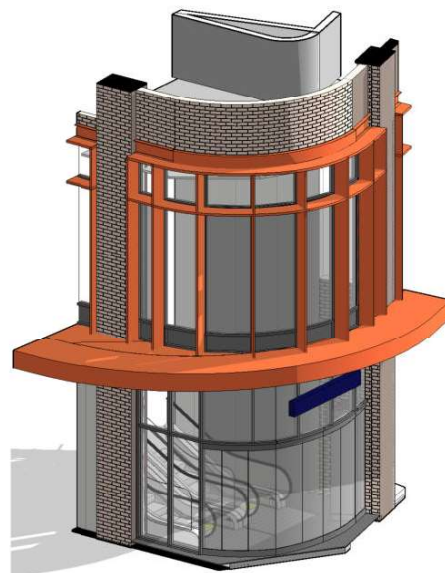


2 FLOOR PLAN (OPEN)  
1:50

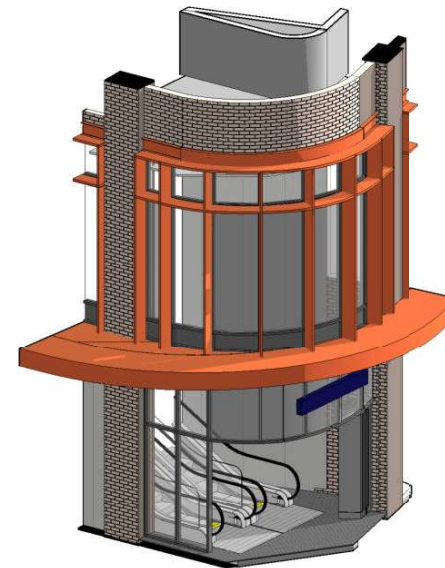


1 FLOOR PLAN (CLOSED)  
1:50

3 DA 202



7 ORTHOGONAL VIEW (CLOSED)



8 ORTHOGONAL VIEW (OPEN)

REV	DESCRIPTION	DATE	APP.
1	ISSUED TO COUNCIL	12.04.24	AC
2	ISSUED TO COUNCIL	15.05.24	AC

Client  
**STASIA PTY LTD**

Project  
**Cleveland St Mixed Use**

Drawing  
**ENTRY THRU ESCALATORS PLANS & ELEVATION**

A1 Scale 1 : 50

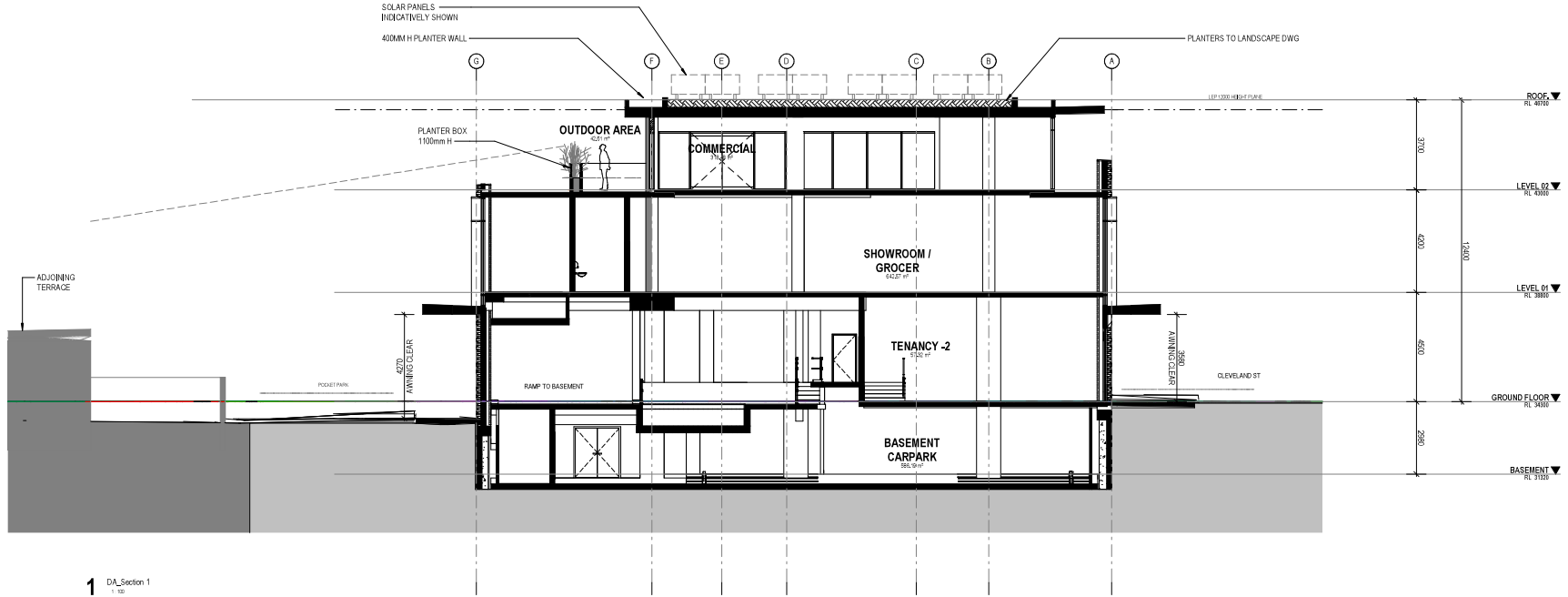
Project 220098

Issue 2

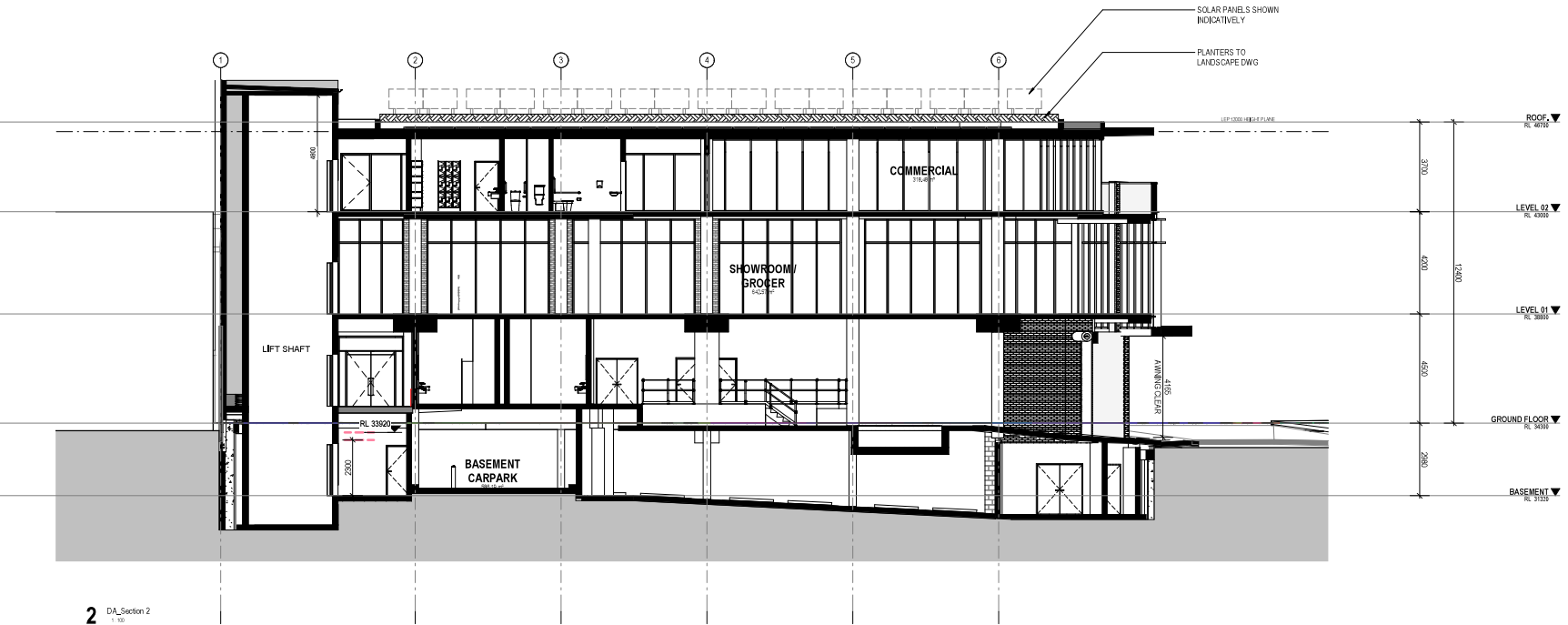
Number DD - DR - AR - DA 202

Details  
Copyright Conrad Gargett. ACN 636 485 373 ABN 61 636 485 373  
Do not scale this drawing and verify all dimensions and levels on site.  
Nominated Architect: Lawrence Totho NSW Reg. 12950,  
Nominated Architect: Brian Dickinson NSW Reg. 11720,  
Nominated Architect: Laura Cockburn NSW Reg. 6360.

SCALE 1:50



1 DA\_Section 1  
1/10



2 DA\_Section 2  
1/10

153

REV	DESCRIPTION	DATE	APP.
1	ISSUED FOR DA	30.06.23	AC
2	ISSUED TO COUNCIL	07.03.24	AC
3	ISSUED TO COUNCIL	12.04.24	AC
4	ISSUED TO CONSULTANT	02.05.24	JM
5	ISSUED TO COUNCIL	15.05.24	AC

Client  
**STASIA PTY LTD**

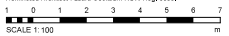
Project  
**Cleveland St Mixed Use**

Drawing  
**SECTIONS**

A1 Scale: 1 : 100  
Project: 220098  
Issue: 5

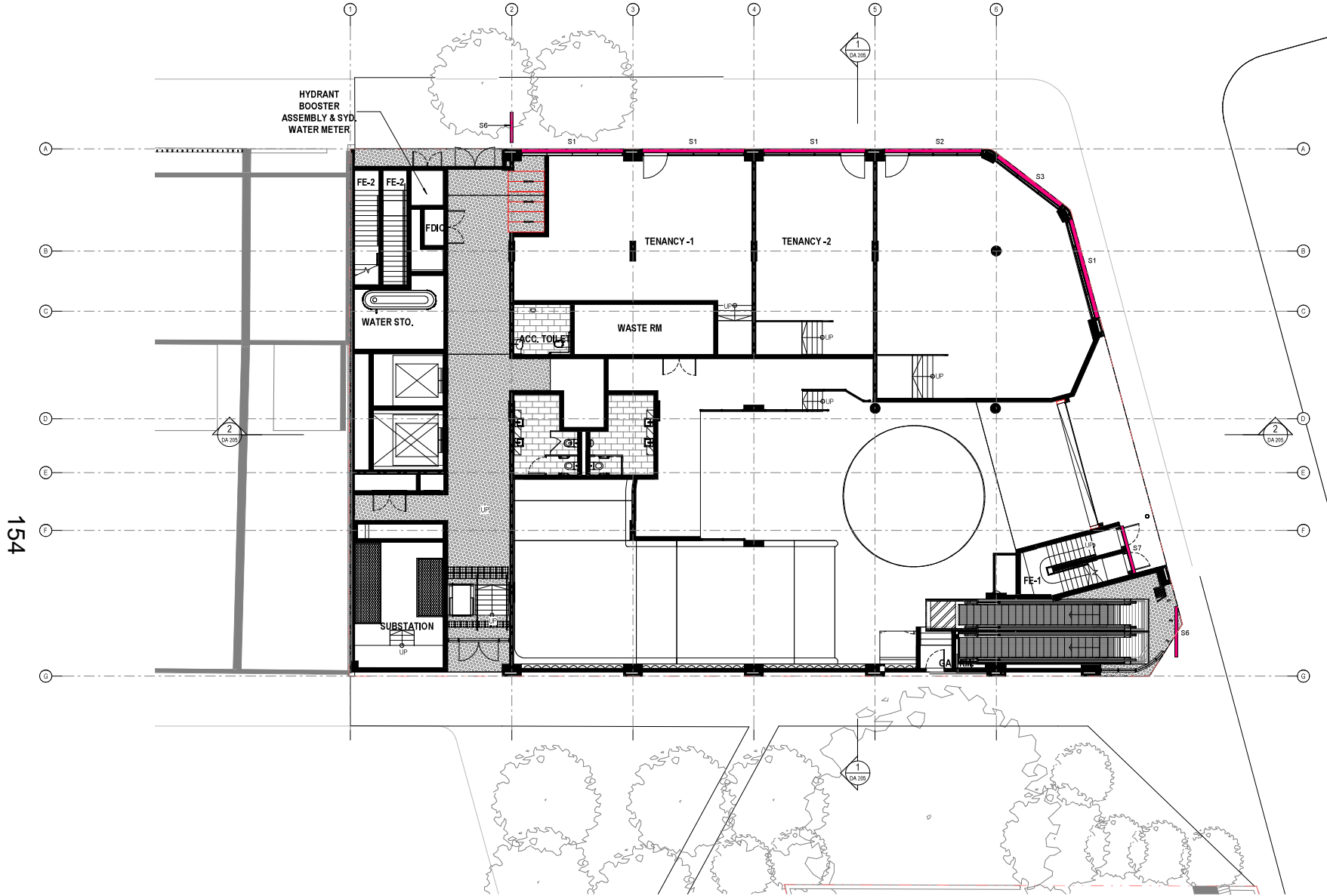
Number: DD - DR - AR - DA 205

Details  
Copyright Conrad Gargett, ACN 636 463 373 ABN 61 631 465 375  
Do not scale this drawing and verify all dimensions and levels on site.  
Nominated Architect: Lawrence Totho NSW Reg. 10255,  
Nominated Architect: Orian Condon NSW Reg. 11739,  
Nominated Architect: Laura Cookburn NSW Reg. 6360.



DEVELOPMENT APPROVAL





SIGNAGE LEGEND	
ABBREV.	DESCRIPTION
S1	5500 X 530 MM ILLUMINATED SIGN ZONE
S2	4800 X 530 MM ILLUMINATED SIGN ZONE
S3	3900 X 530 MM ILLUMINATED SIGN ZONE
S6	1500 X 350 MM ILLUMINATED HARPER SIGN
S7	2600 X 900 MM ILLUMINATED HARPER SIGN

Revision	DESCRIPTION	DATE	APP.
1	ISSUED FOR DA	30.06.23	AC
2	ISSUED TO COUNCIL	07.04.24	AC
3	ISSUED TO COUNCIL	15.02.24	AC

Client  
**STASIA PTY LTD**

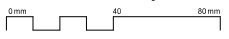
Project  
**Cleveland St Mixed Use**

Drawing  
**SIGNAGE PLAN - GROUND FLOOR**

A1 Scale: 1 : 100  
Project: 220098  
Issue: 3

Number DD - DR - AR - DA 310

Details  
Copyright Conrad Gargett, ACN 656 455 373 ABN 61 631 465 375  
Do not scale this drawing and verify all dimensions and levels on site.  
Nominated Architect: Lawrence Tomko NSW Reg. 10255,  
Nominated Architect: Ollian Condon NSW Reg. 11726,  
Nominated Architect: Laura Cookburn NSW Reg. 6360.



**FINISHES LEGEND**

ABBREV.	DESCRIPTION
BRK	ASSORTED RED BRICK
CFP	CEMENT FINISH PANNELLING
GAF	GLAZING ALUMINIUM FRAME
GLE	EXTERNAL GLAZING
MFC	METAL FINISH CLADDING
TLG	TLING



155

Revision	REV	DESCRIPTION	DATE	APP.
1	ISSUED TO COUNCIL	07.03.24	AC	
2	ISSUED TO COUNCIL	15.05.24	AC	

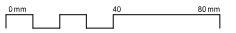
Client  
**STASIA PTY LTD**

Project  
**Cleveland St Mixed Use**

Drawing  
**MATERIAL & FINISHES**

A1 Scale  
Project 220098  
Issue 2  
Number DD - DR - AR - DA 001

**Details**  
Copyright Conrad Gargett, ACN 636 465 373 ABN 61 636 465 373  
Do not scale this drawing and verify all dimensions and breaks on site.  
Notified Architect - Lawrence Toole NSW Reg. 10295,  
Notified Architect - Gillian Davidson NSW Reg. 11726,  
Notified Architect - Laura Cockburn NSW Reg. 6360.



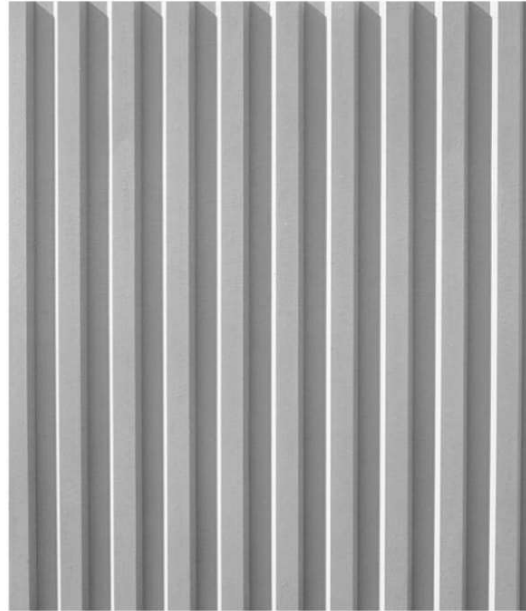
**DEVELOPMENT APPROVAL**

**FINISHES LEGEND**

BRK	ASSORTED RED BRICK
CFP	CEMENT FINISH PANELLING
CON	CONCRETE
DB	DISTRIBUTION BOARD
DBF	HAWA VARIOTEC GLAZED BI-FOLD DOORS OR EQUIVALENT
DP	DOWNPIPE
FRZ	FROSTED GLASS FINISH
GAF	GLAZING ALUMINIUM FRAME - BLACK
GCB	COLOUR BACKED OPAQUE EXTERNAL GLAZING-GREY
GLE	EXTERNAL GLAZING
LS	SWITCH LIGHT
MCP	METAL FINISH CAPPING TO MATCH GAF
MFC	METAL FINISH CLADDING
MFP	METAL FINISH PROFILES TO MATCH MFC
MLV	METAL LOUVRES COLOUR TO MATCH GAF
PCF	PAINTED COLOR TO MATCH CFP
POG	PAINTED COLOUR TO MATCH GAF
PLD	PERFORATED PANEL LIFT DOOR
RPC	REBbed PRECAST CONCRETE PANEL
TIG	TIILING



PLD



RBC



DBF

REV	DESCRIPTION	DATE	APP.
1	ISSUED TO CONSULTANT	02.05.24	JM
2	ISSUED TO COUNCIL	15.05.24	AC

Client  
**STASIA PTY LTD**

Project  
**Cleveland St Mixed Use**

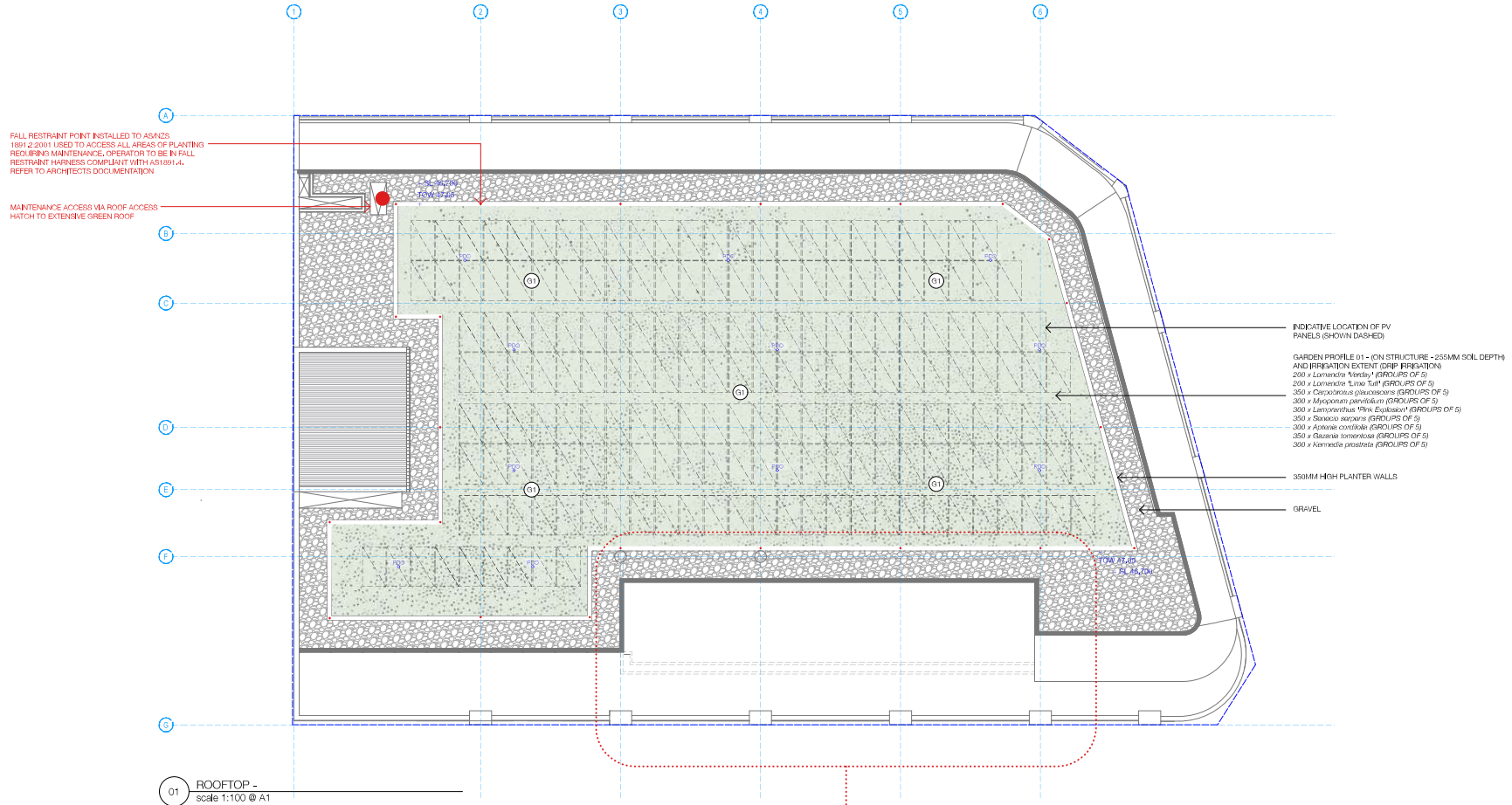
Drawing  
**MATERIAL FINISHES  
EXAMPLE**

A1 Scale  
Project 220098  
Issue 2  
Number DD - DR - AR - DA 002

Details  
Copyright Conrad Gargett. ACH 636 465 373 ABN 61 636 465 375  
Do not scale this drawing and verify all dimensions and levels on site.  
Nominated Architect: Lawrence Totho NSW Reg. 10255.  
Nominated Architect: Oliver Condonson NSW Reg. 11726.  
Nominated Architect: Laura Cookburn NSW Reg. 6360.  
SCALE 1:1

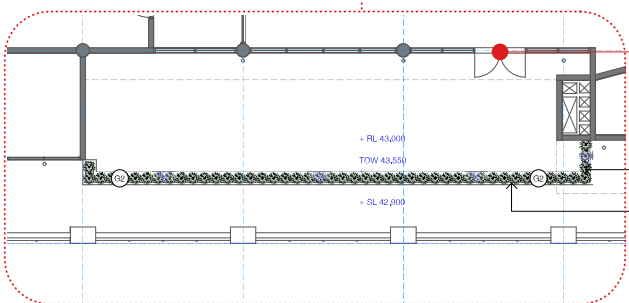


**PRELIMINARY**



- INDICATIVE LOCATION OF PV PANELS (SHOWN DASHED)
- GARDEN PROFILE 01 - (ON STRUCTURE - 355MM SOIL DEPTH AND IRRIGATION EXTENT (DRIP IRRIGATION))
  - 200 x Lavandula 'Mantley' (GROUPS OF 5)
  - 200 x Lavandula 'Luna Tooth' (GROUPS OF 5)
  - 350 x Carpobrotus glaucocarpus (GROUPS OF 5)
  - 300 x Myoporum parviflorum (GROUPS OF 5)
  - 300 x Lamprolaima 'Pink Explosion' (GROUPS OF 5)
  - 350 x Senecio aureus (GROUPS OF 5)
  - 300 x Anemone cordifolia (GROUPS OF 5)
  - 350 x Gaura heterostylis (GROUPS OF 5)
  - 300 x Anemone pratensis (GROUPS OF 5)
- 350MM HIGH PLANTER WALLS
- GRAVEL

01 ROOFTOP - scale 1:100 @ A1



MAINTENANCE ACCESS VIA LEVEL 2 TENANCY - NO HEIGHT SAFETY INSTALLATION REQUIRED

- GARDEN PROFILE 02 (ON STRUCTURE - 555MM SOIL DEPTH AND IRRIGATION EXTENT (DRIP IRRIGATION))
- 48 x *Phloxendron Annetu*
- 650MM HIGH PLANTER WALLS

01 LEVEL 02 - INSERT scale 1:100 @ A1

**GREEN WASTE REMOVAL**  
ALL GREEN WASTE GENERATED BY THE MAINTENANCE WORK SHALL BE CONTAINED WITHIN THE IMMEDIATE WORK AREA, AND SHALL NOT LEAK INTO ADJACENT AREAS, OR OUTSIDE THE SITE. ALL DEBRIS SHALL BE CONTAINED AND REMOVED FROM SITE (W/ LEFT) TO AN APPROVED CERTIFIED TIPPING AND LEGAL RECYCLING DEPOT LOCATION USING SUITABLE CLOSED WASTE CONTAINERS AND VEHICLES.

**NOT FOR CONSTRUCTION**

REV:	DATE:	DOCUMENT STATUS/ AMENDMENTS
01	01.03.24	FOR DA - RESPONSE TO COUNCIL

REFER TO LALP02 FOR NOTES AND PLANT SCHEDULE



**black beetle**  
Landscape Architecture and Design

Black Beetle Pty Ltd  
Level 1, 1073 Pittwater Road, Collaroy NSW 2097  
Tel: 0422 104 416  
email: blackbeetle@blackbeetle.com.au

PROJECT	Drawn	IK / GB	Client
Commercial Development	L	K / GB	STASIA Pty Ltd
375 - 387 Cleveland Street SURRY HILLS, NSW	Scale:	1:100 @ A1	Status:
			For DA

DRAWING TITLE	JOB NUMBER	DRAWING NUMBER - ISSUE
Landscape Plan - Level 2 and Rooftop	BB 1341	LA LP 01 / 01

**LEGEND**

- BOUNDARY LINE
- ①1 GARDEN PROFILE 01 - GARDEN ON STRUCTURE - 255MM SOIL DEPTHS AND IRRIGATION EXTENT (DRIP IRRIGATION) - REFER TO LANDSCAPE PLANS
- ①2 GARDEN PROFILE 02 - GARDEN ON STRUCTURE - 555MM SOIL DEPTHS AND IRRIGATION EXTENT (DRIP IRRIGATION) - REFER TO LANDSCAPE PLANS
- RL 43.000 FINISHED LEVEL
- SL 42.00 STRUCTURAL SLAB LEVEL
- TOW 46.00 TOP OF WALL
- FSO PLANTER DRAINAGE OUTLET

**NOTES**

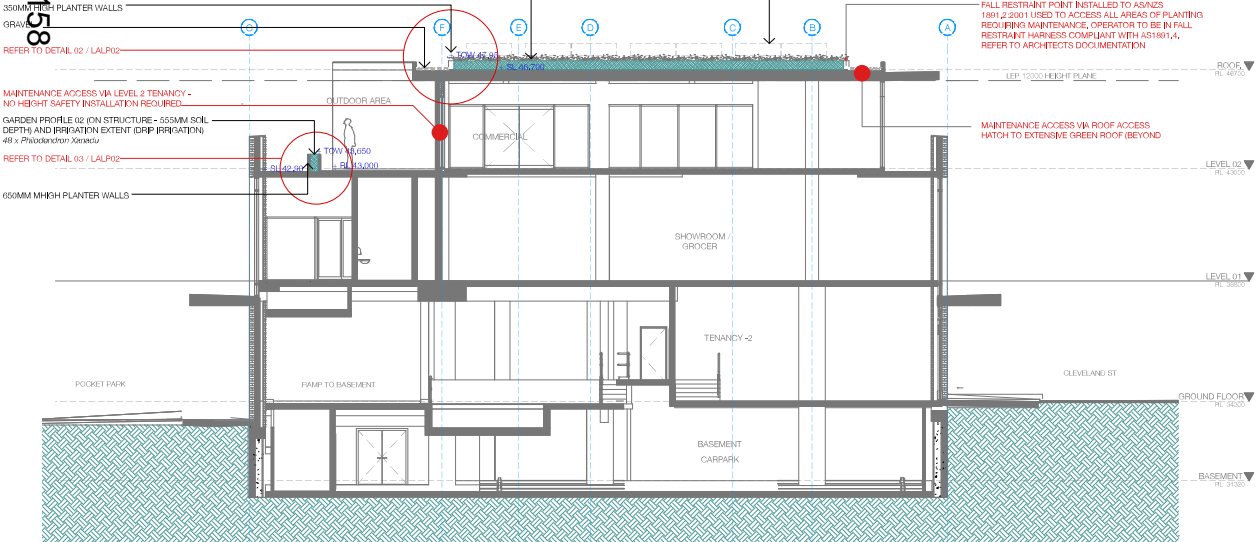
1. DRAWINGS TO BE READ IN CONJUNCTION WITH ARCHITECTURAL AND ENGINEERING DRAWINGS, NOTE ALL LANDSCAPE HARDWORKS INCLUDING PAVING, STEPS, RETAINING WALLS AND FENCES TO ARCHITECTS DOCUMENTATION AND DETAILS.
2. ALL PLANTING AREAS TO BE MULCHED, TYPICALLY 75MM DEPTH, ORGANIC MULCH TO CONFORM TO AS 4454-2012 COMPOST, SOIL CONDITIONERS AND MULCHES.
3. SOILS TO CONFORM TO AS 4419-2018 SOILS FOR LANDSCAPING AND GARDENS USE.
  - ON STRUCTURE 255 - 355MM SOIL DEPTHS
4. ALL PLANTING AREAS TO HAVE DRIP IRRIGATION SYSTEM WITH BACK UP PROTECTION TO THE MAIN SUPPLY, TO ALL CURRENT SYDNEY WATERS REQUIREMENTS AND RELEVANT AUSTRALIAN STANDARDS.
5. MAINTAIN ALL WORKS DURING THE CONTRACT PERIOD FOR 52 WEEKS FROM THE DATE OF PRACTICAL COMPLETION INCLUDING, BUT NOT LIMITED TO WATERING, WEEDING, RUBBISH REMOVAL, REPLACEMENT PLANTING, DISEASE AND PEST CONTROL, PRUNING, SOIL AND MULCH CONTROL REINSTATEMENT.
6. GREEN WASTE REMOVAL - ALL GREEN WASTE GENERATED BY THE MAINTENANCE WORK SHALL BE CONTAINED WITHIN THE IMMEDIATE WORK AREA, AND SHALL NOT LEAK INTO ADJACENT AREAS, OR OUTSIDE THE SITE. ALL DEBRIS SHALL BE CONTAINED AND REMOVED FROM SITE TO AN APPROVED CERTIFIED TIPPING AND LEGAL RECYCLING DEPOT LOCATION USING SUITABLE CLOSED WASTE CONTAINERS AND VEHICLES.

**PLANT SCHEDULE**

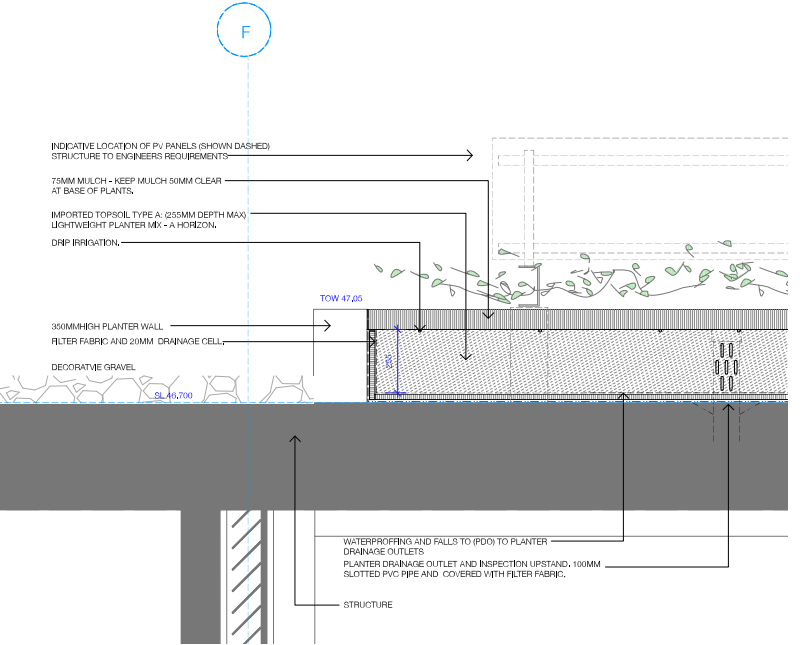
BOTANICAL NAME	COMMON NAME	HEIGHT	POT SIZE	QUANTITIES
<b>SHRUBS AND GROUNDCOVERS</b>				
<i>Azalea corallina</i>	Sun Rose	0.2M	150MM	300
<i>Campobasis pilosus</i>	Pig Face	0.2M	150MM	350
<i>Gazania heterophylla</i>	Gazania	0.2M	150MM	350
<i>Kalanchoe crotolaria</i>	Flamingo Plant	0.1M	150MM	300
<i>Lamproanthus Pink Embroider</i>	Pink Embroider	0.1M	150MM	300
<i>Lomandra 'Luna Tint'</i>	Luna tint	0.6M	150MM	200
<i>Lomandra 'Verde'</i>	Verde	0.6M	150MM	200
<i>Myoporum laetifolium 'Merrona'</i>	Yareana Creeping Bookbelle	0.1M	150MM	300
<i>Phacelia 'Marsala'</i>	Marsala Phacelia	0.2M	200MM	48
<i>Stachys serotina</i>	Blue Chalk Sticks	0.1M	150MM	300



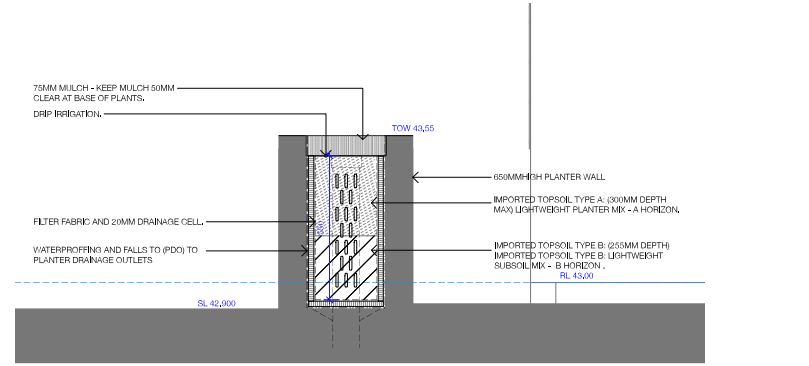
GARDEN PROFILE 01 - (ON STRUCTURE - 255MM SOIL DEPTH AND IRRIGATION EXTENT (DRIP IRRIGATION) - 200 x Lomandra 'Merrona' (GROUPS OF 5)  
 200 x Lomandra 'Luna Tint' (GROUPS OF 5)  
 300 x *Campobasis pilosus* (GROUPS OF 5)  
 300 x *Myoporum laetifolium* (GROUPS OF 5)  
 300 x *Lamproanthus Pink Embroider* (GROUPS OF 5)  
 300 x *Kalanchoe crotolaria* (GROUPS OF 5)  
 300 x *Azalea corallina* (GROUPS OF 5)  
 300 x *Stachys serotina* (GROUPS OF 5)



01 SECTION AA  
Scale: 1:100 @ A1



02 GARDEN PROFILE 01  
Scale: 1:10 @ A1



03 GARDEN PROFILE 02  
Scale: 1:10 @ A1

**NOT FOR CONSTRUCTION**

REV.	DATE	DOCUMENT STATUS/ AMENDMENTS
01	01.03.24	FOR DA - RESPONSE TO COUNCIL

PROJECT  
**Commercial Development**  
 375 - 387 Cleveland Street  
 SURRY HILLS, NSW

black beetle  
 Landscape Architecture and Design

Black Beetle Pty Ltd  
 Level 1, 1073 Pittwater Road, Collaroy NSW 2097  
 Tel: 0422 104 416  
 email: blackbeetle@blackbeetle.com.au

Drawn	IK / GB	Client
L	Architected Authorised	STASIA Pty Ltd
K / GB	Status	For DA
Scale	As shown @ A1	
DRAWING TITLE		
Legend / Notes / Plant Schedule / Details		
Job Number	BB 1341	Drawing Number
		LA LP 02/ 01